



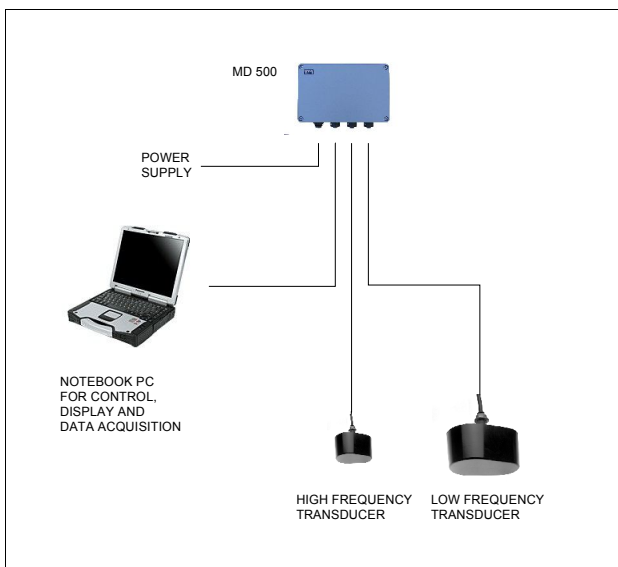
MD 500

black-box, single/dual frequency hydrographic survey echo sounder

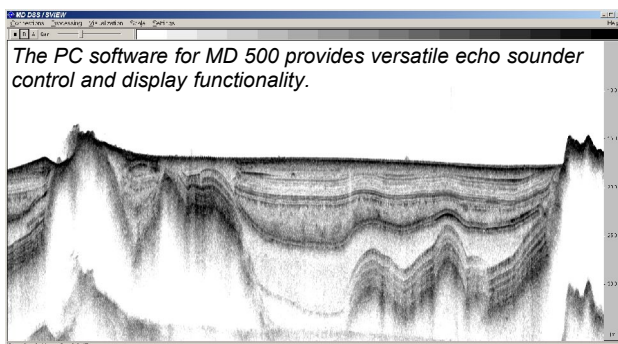
MD 500 is a black-box type echo sounder for hydrographic surveys in shallow inland, coastal and offshore waters.

It provides single or dual-frequency operation in the range of 10 kHz to 200 kHz, and is hence ideal for both high resolution bathymetry and sediment profiling surveys.

The deliverables for a standard MD 500 system consist of the echo sounder unit, transducer(s), and control and display software for PC.



MD 500 allows integration with existing components of almost any survey system.



FEATURES

- A black-box unit remotely controllable from PC
- Advanced digital signal processing
- Operating voltage: 10 .. 32 V DC
- Depth range: 0.5 .. 200 m
- Operating frequency: 10 kHz .. 200 kHz (single, dual frequency as option)
- Ping rate: 0.1 .. 20 pings/second
- Resolution: 0.01 m (200 kHz)
- Accuracy: +/- (0.02 m + 0.2 % of depth) RMS (200 kHz, high-bandwidth transducer)
- Gain controls: TVG, master gain
- Sound velocity setting: 1350 .. 1600 m/s
- Serial interface to PC
- Enclosure sealed to IP66
- Dimensions: 26 cm x 16 cm x 9 cm (excluding connectors)
- Weight: 3 kg

OPTIONS

- Extended depth range
- Ethernet interface
- Dual frequency operation
- Transducers with various frequencies and beam widths
- Transducer mounting accessories

For more information, contact info@meridata.fi.